

# HM8

- 合金钢材料，单剪切梁结构。
- 防护等级 IP68
- 主要用于电子平台秤、地中衡等电子衡器。



## 推荐选择型号

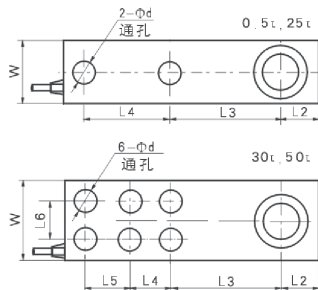
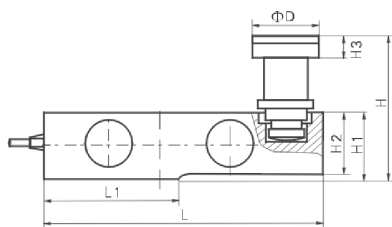
1.0t-30t	C3	HM8-C3-xxt-6B6
----------	----	----------------



## 技术指标

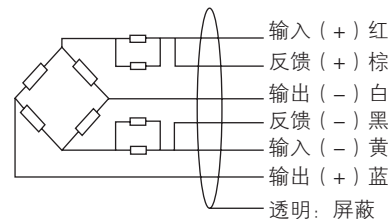
额定载荷	t	1/2/2.5/3/5/10/15/20/25/30		
精度		C3		
最大检定分度数	nmax	3000		
最小检定分度值	Vmin	Emax/10000		
综合误差	(%FS)	≤ ±0.020		
蠕变	(%FS/30min)	≤ ±0.016		
温度对输出灵敏度的影响	(%FS/10℃)	≤ ±0.011		
温度对零点输出的影响	(%FS/10℃)	≤ ±0.015		
输出灵敏度	(mV/V)	2.0 ± 0.002		
输入阻抗	(Ω)	400 ± 10		
输出阻抗	(Ω)	351 ± 2		
绝缘阻抗	(MΩ)	≥ 5000(100VDC)		
零点输出	(%FS)	≤ ±1.0		
温度补偿范围	(℃)	-10 ~ +40		
允许使用温度范围	(℃)	-35 ~ +65		
推荐激励电压	(V)	5 ~ 12(DC)		
最大激励电压	(V)	18(DC)		
安全过载范围	(%FS)	150		
极限过载范围	(%FS)	300		
防护等级		IP 68		
ATEX 等级 (可选)		II1G Ex ia IIC T4	II1D Ex iaD 20 T73℃	II3G Ex nL IIC T4

## 外型尺寸 mm (inch)



尺寸 量程	H	H1	H2	H3	ΦD	Φd	W	L	L1	L2	L3	L4	L5	L6
1-2t	57.9 (2.28)	43 (1.69)	37 (1.47)	5 (0.2)	35 (1.38)	13 (0.51)	37 (1.47)	203 (7.99)	95 (3.74)	22 (0.87)	98 (3.86)	64 (2.52)	/	/
2.5 t	57.9 (2.28)	43 (1.69)	37 (1.47)	5 (0.2)	35 (1.38)	15 (0.59)	37 (1.47)	203 (7.99)	95 (3.74)	22 (0.87)	98 (3.86)	64 (2.52)	/	/
3t	62.9 (2.48)	43 (1.69)	37 (1.47)	5 (0.2)	35 (1.38)	15 (0.59)	37 (1.47)	203 (7.99)	95 (3.74)	22 (0.87)	98 (3.86)	64 (2.52)	/	/
5t	78.7 (3.1)	52 (2.05)	48 (1.89)	8 (0.31)	42 (1.65)	21 (0.83)	48 (1.89)	235 (9.25)	110 (4.33)	22 (0.87)	124 (4.88)	66 (2.6)	/	/
10t,15t	127.7 (5.03)	67 (2.64)	60 (2.36)	12 (0.47)	57 (2.24)	28 (1.10)	60 (2.36)	279 (10.98)	133 (5.24)	32 (1.26)	140 (5.51)	82 (3.22)	/	/
20t,25t	143.5 (5.65)	82.5 (3.25)	70 (2.76)	12 (0.47)	70 (2.76)	34 (1.34)	70 (2.76)	318 (12.52)	153 (6.02)	38 (1.5)	159 (6.26)	89 (3.5)	/	/
30t	174 (6.85)	115 (4.53)	90 (3.54)	18 (0.71)	70 (2.76)	26 (1.02)	96 (3.78)	374 (14.72)	189 (7.44)	44.5 (1.75)	181 (7.13)	76 (2.99)	51 (2.01)	46 (1.81)

## 接线方式



- 六芯屏蔽电缆线：Φ6.2mm
- 标准长度：6m